

**Scrub suit, spunlace, non sterile**

Tunic with round neckline, short sleeve and front pockets

Adjustable pants with belt. Pants with back pocket

Individually packaged set

References	Size	Units per box
FPPIJ01PT68	S	40 units*
FPPIJ02PT68	M	40 units*
FPPIJ03PT68	L	40 units*
FPPIJ04PT68	XL	40 units*
FPPIJ05PT68	XXL	40 units*

\*estimated

**Intended use:**

Scrub suit, intended for use by health care professionals.

**Product description:**

Scrub suit in SPUNLACE.

Round neckline tunic, short sleeve and front pockets.

The pants trousers have 1 pocket on the right side and are adjustable with belt.

Both pieces are packed in a polyethylene bag.

Single use product, not sterile.

**Raw materials:**

Spunlace, 68 gr/m<sup>2</sup>.

Material with low linting, with impervious grade e liquid repellent, resistant to traction and free of latex

**Folding:**

The product is presented with functional fold that allows a correct use without indications of use.

Final fold dimension: 30x27 cm

**Packaging**

Product packaged in polyethylene bag for added protection against dust and outer box.

Outer box (39x29x45 cm)

Palletizing system: 32 boxes per pallet: 1.20x0.80x1.95 cm.

**Labelling:**

Identification label in outer box.

The label provides information regarding the product reference, designation, manufacturer and harmonized symbols for single use, in the non sterile status, protection against moisture and sunlight, batch.

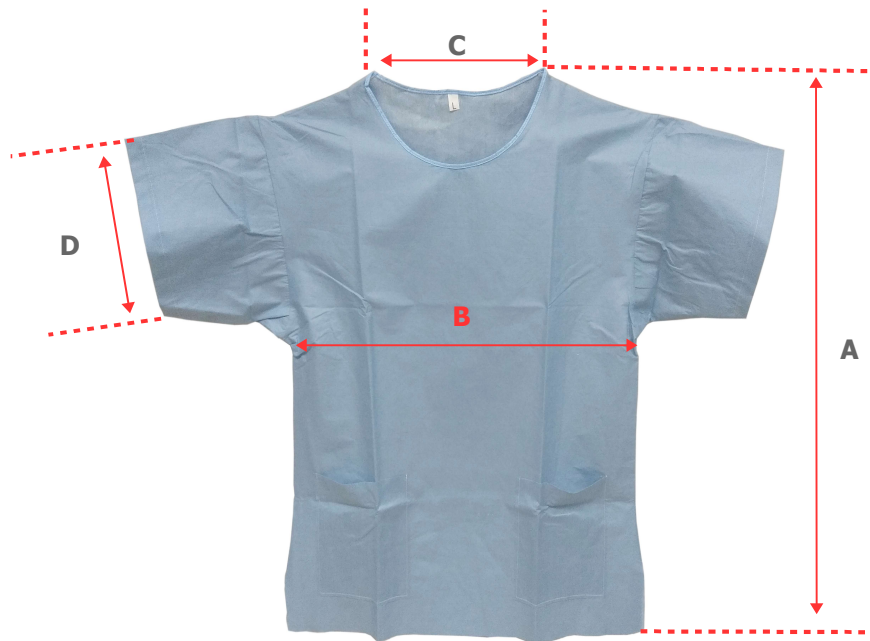
**Shelf life:**

5 years if storage on the correct way.

Product should be protected from sunlight and kept dry.

**Measures:**

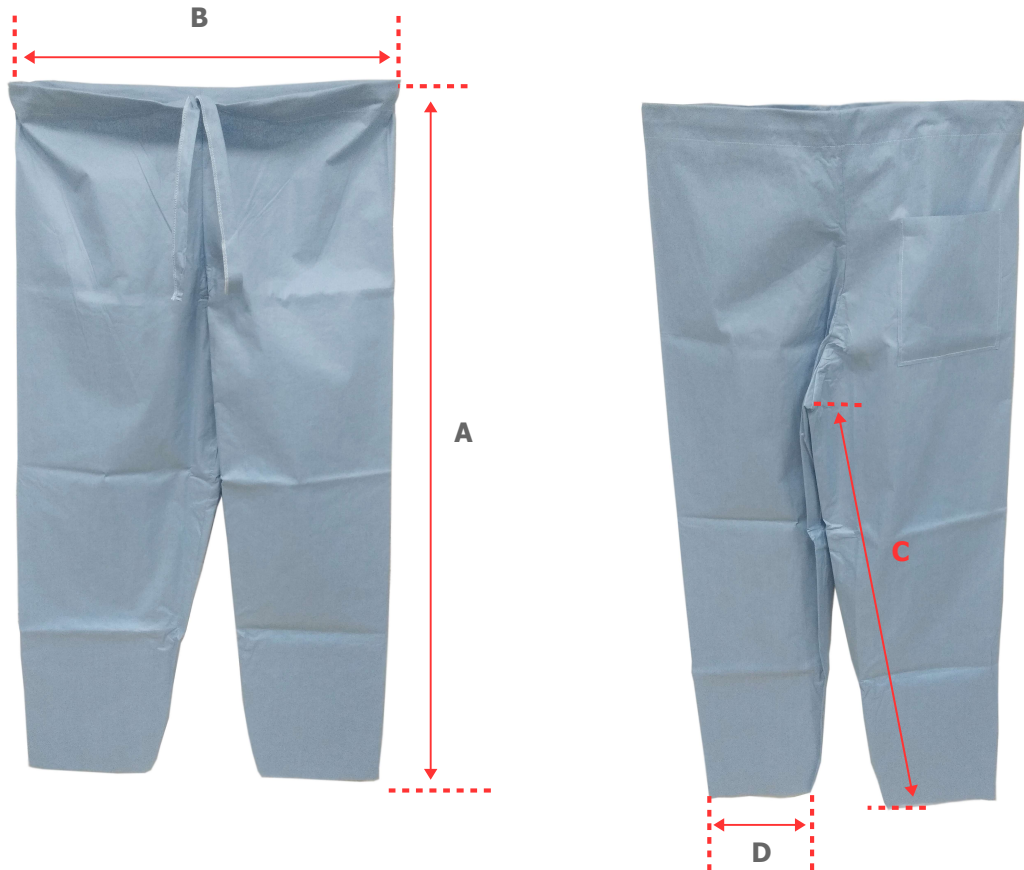
## 1. Shirt Dimension:



	A	B	C	D
S	71	56	21	21
M	74	59	21	22
L	75	64	22	23
XL	77	69	23	23
XXL	81	74	24	23

Dimensions in cm

## 2. Pants dimension:



	A	B	C	D
S	106	50	78	21
M	111	52	79	21
L	114	56	80	22
XL	117	60	80	22
XXL	122	66	82	22

Dimensions in cm